


Thank you ...

for choosing a MOVISI product, and congratulations on your purchase of LINK, our modular partitioning system.

LINK is crafted from Arpro EPP, an innovative Expanded Polypropylene foam material that enhances your furniture experience for greater flexibility.

LINK is incredibly light, yet exceptionally strong, making it a breeze to move and rearrange your furnishings as your needs change. In minutes, and without any tools. When you move it about, LINK will not scratch even the finest hardwood floors.

Importantly, the material is so environmentally friendly that it is actually approved for food contact.

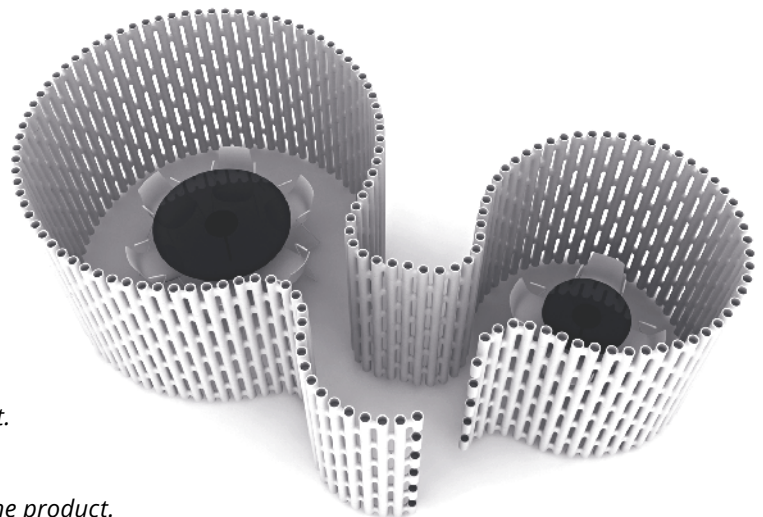
It is completely odourless, free from toxins, and 100% recyclable, making it a responsible choice for your home or office. 

Cleaning: like water off a duck's back, LINK fends off dirt, spills and stains of all sorts. Just wipe with a damp cloth. You can even wash the LINK modules in your sink or shower, as LINK is entirely waterproof. Avoid abrasive cleaning agents.

Stay up to date with our latest design news.

Visit <https://movisi.com> and <https://shop.movisi.com>

COLOURS:



*Product guidelines:*

- Do not lean, climb, or jump on the product.
- Avoid contact with sharp objects.
- Do not place hot objects on the product.
- Do not overload or hang heavy items on the product.
- You can use LINK outdoors but it is not recommended for continuous exposure to UV light, due to the nature of the polymer it is made from.
- Movisi is not responsible for damage caused by anything or anyone that does not follow the guidelines for use of the product.

  
Made in Germany

  
MODULAR LIGHTWEIGHT FURNITURE

LINK ROOM DIVIDER

## The sound of colour

Elevate your LINK space with SONIC FILLER PLATES, available in a wide spectrum of colours, providing both privacy and enhanced sound control. These filler plates are designed to create partially or fully closed privacy screens in homes, offices or at events. They effectively manage noise and contribute to eco-friendly practices, making them the perfect addition to your space. The felt-like composition of the SONIC material, allows it to absorb as many sound waves as possible. LINK filler plates are also versatile for coordinating with your branding in various settings.

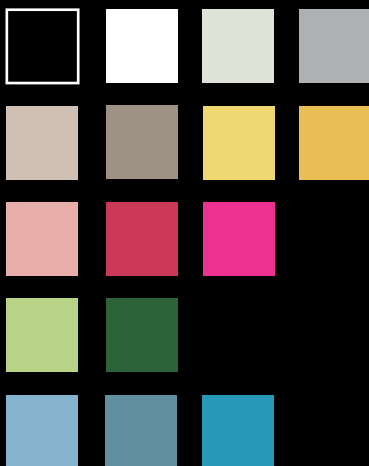
### CRADLE-TO-CRADLE & LEED Certified

In today's world, being environmentally conscious is essential. Our filler plates are made from a minimum of 60% upcycled plastic bottles from post-consumer sources. The origin of the PET fibers is certified by an independent institute and we are proud to say that the raw material can be traced down 100 %.

### Effortless Installation

Whether you're building your room divider or adding them to your existing LINK divider, simply slide the filler plates into the gaps or push them in.

### COLOURS:



LINK SONIC FILLER PLATES