

Thank you ...

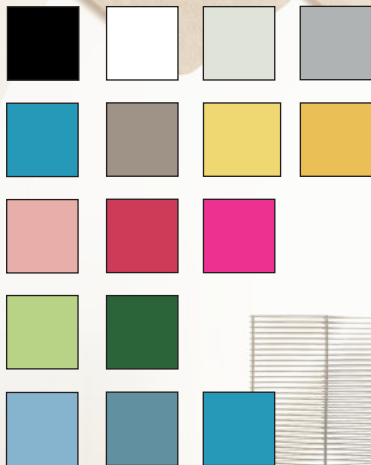
for choosing our HUSH Acoustic Wall Panels – your key to stylish tranquility.

Certified Cradle to Cradle and LEED, the HUSH Panels are made with a minimum of 60% recycled PET plastic bottles. They are durable, free from additives and glues, naturally antimicrobial, and easy to clean.

With their magnetic wall attachment, switching panels is seamless. Get ready for a lifetime of vibrant acoustic brilliance.

For more information, please visit:  
<https://movisi.com> und <https://shop.movisi.com>

COLORS:



HUSH WALL PANELS

**movisi**<sup>®</sup>  
MODULAR LIGHTWEIGHT FURNITURE

## Arranging the Wall Panels

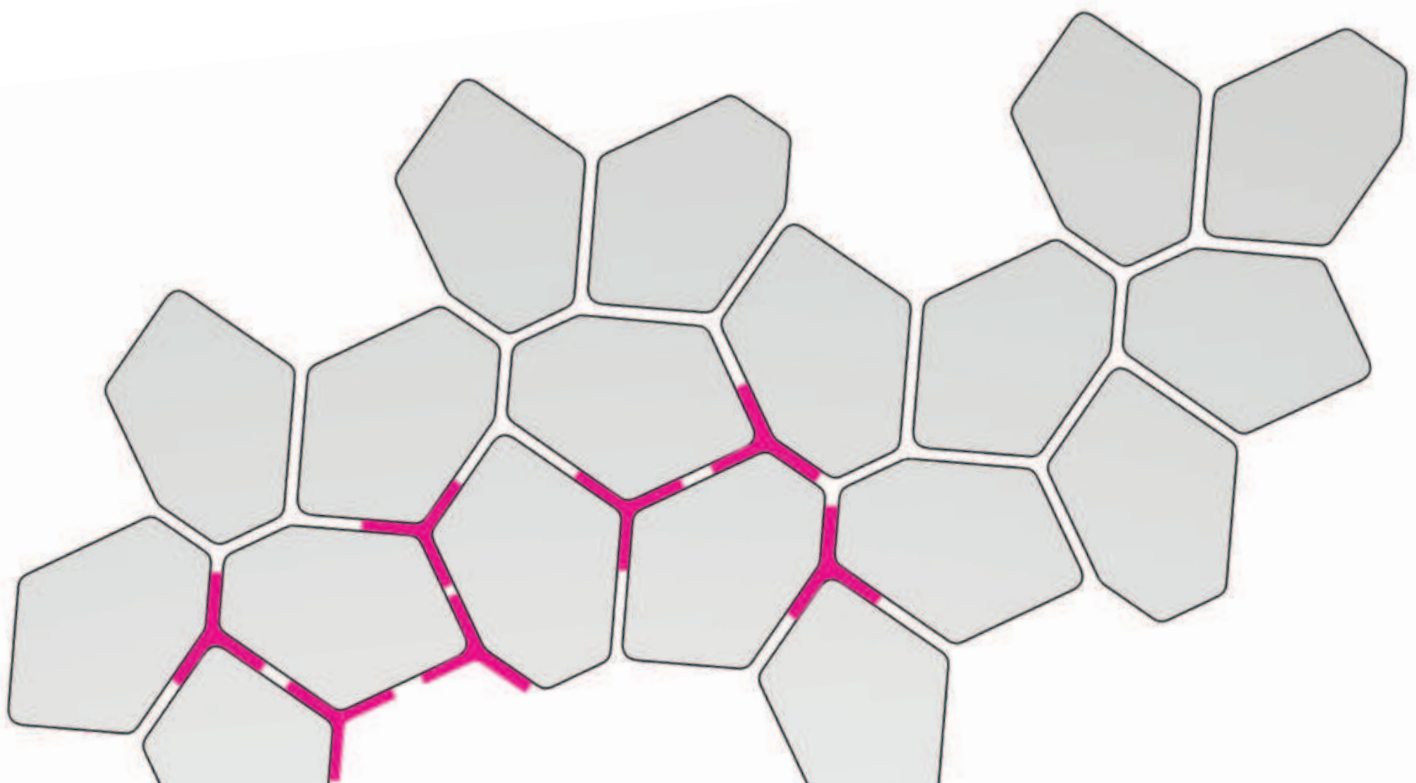
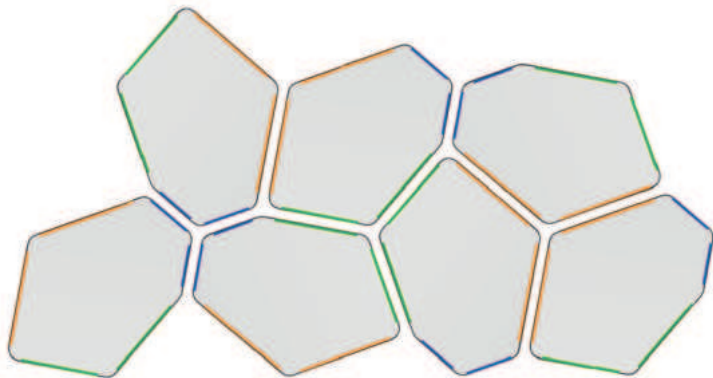
Our wall panels are designed based on the shape of our modular BUILD shelving system.

Although the organic shape of the panels may appear irregular at first glance, a homogeneous and harmonious arrangement is possible.

In general, sides with equal edge lengths always meet each other, creating an orderly pattern. To achieve an orderly arrangement, please follow the example shown below.

With the help of the two star-shaped mounting aids (X and Y), you can optionally arrange the wall panels at a distance of 12 mm or 24 mm from each other. The mounting aids also ensure precise alignment.

You can of course also arrange the HUSH panels freely according to your personal taste.



## Installation

The HUSH panels are equipped with self-adhesive magnets. Ensure that your wall is smooth, clean, and free of dust.

### Step 1:

Peel off the protective film from the 3 magnets on the first panel.

### Step 2:

Press the panel firmly against the wall at the desired position for at least 10 seconds, especially where the magnets are located.

### Step 3:

Shift the panel sideways until it detaches from the wall magnets. Please do not pull, as this may cause the magnets' adhesive to loosen again.

### Step 4:

Press each wall magnet firmly against the wall again for at least 30 seconds, e.g., with a small wooden block. Now place the HUSH panel back on the magnets on the wall.

### Step 5:

Use the star-shaped mounting aids (X and Y) to position the next HUSH panel. Repeat the process from Step 1.

### Note after installation:

Carefully remove all panels from the wall and let the magnets rest without any load for 24 to 72 hours. This ensures optimal bonding of the adhesive to the surface and maximum adhesion.





## Product Care

Unlike natural raw materials, PET fibers do not provide a breeding ground for bacteria or fungi.

Since we dye our fibers through before they are pressed, they do not bleach even when aggressive cleaning agents or disinfectants are used. Alcohols as well as aldehydes and even active chlorine can be used to clean the panels.

For daily cleaning we recommend conventional disinfectant (75% alcohol concentration), for a weekly application surface disinfectant sprays such as Pantasept.

Even stubborn dirt caused by pens, red wine or coffee can be removed easily and effectively. For stain removal, we recommend the application of hydrogen peroxide with an exposure time of about 12 hours.

### OPTION 1

For dusting use duster or vacuum cleaner.

### OPTION 2

For slight contamination apply sparkling water on polluted area and wipe carefully with a sponge.

### OPTION 3

For medium contamination apply upholstery cleaner on polluted area and wipe carefully with a sponge.

### OPTION 4

For heavy contamination apply bleach as chlorine or hydrogen peroxide on polluted area and wipe carefully with a sponge and sparkling water.

